

Mellow

THE ENDLESS RIDE



PRESSKIT

Introducing **Mellow** – The **first electric drive** that fits on any **skateboard**.







Mellow is the **Endless Ride for every boardsports enthusiast** – it brings the feeling of surfing and snowboarding to the streets.

It's a last mile concept „**Made in Germany**“ that will change the way we think about **urban mobility**.

It's a **startup** that works as **flexible and decentralized** as the product itself.

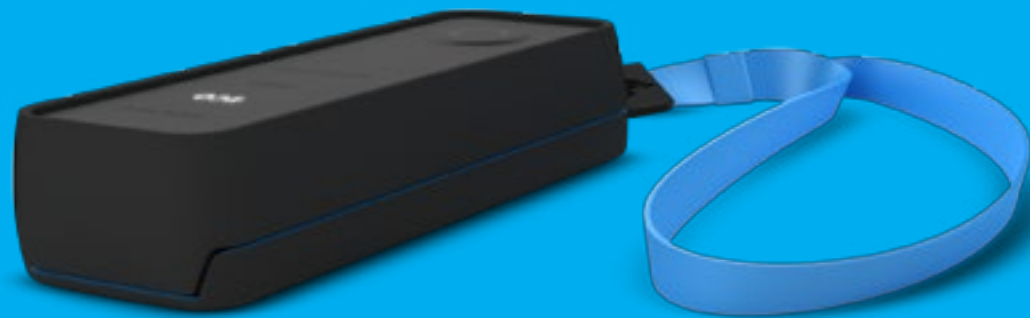
It's a whole **ecosystem** coming to life via the **Mellow App**.

THE MELLOW DRIVE

- First mountable electric skateboard drive
- Two in-wheel motors (40km/h top speed)
- Swappable battery pack (15km range)
- Solid magnesium single frame
- Water and dust proof (IP65)
- Dual braking system
- 3,5 kg light



**MADE IN
GERMANY
TWO YEAR
WARRANTY**

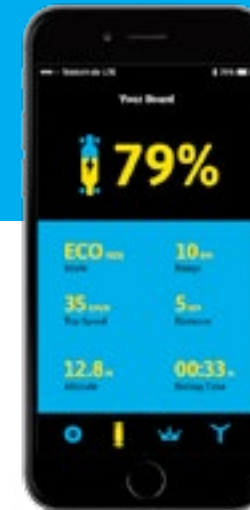
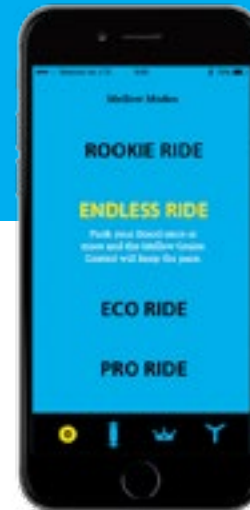
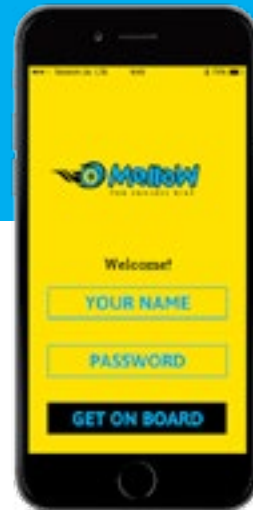


The Remote

- Custom-built one button device
- Push to accelerate – pull to brake
- Secure encrypted Bluetooth connection

The App

- 4 riding modes: Rookie, Eco, Pro & Endless Ride
- Access to the Mellow Community
- Technical Support





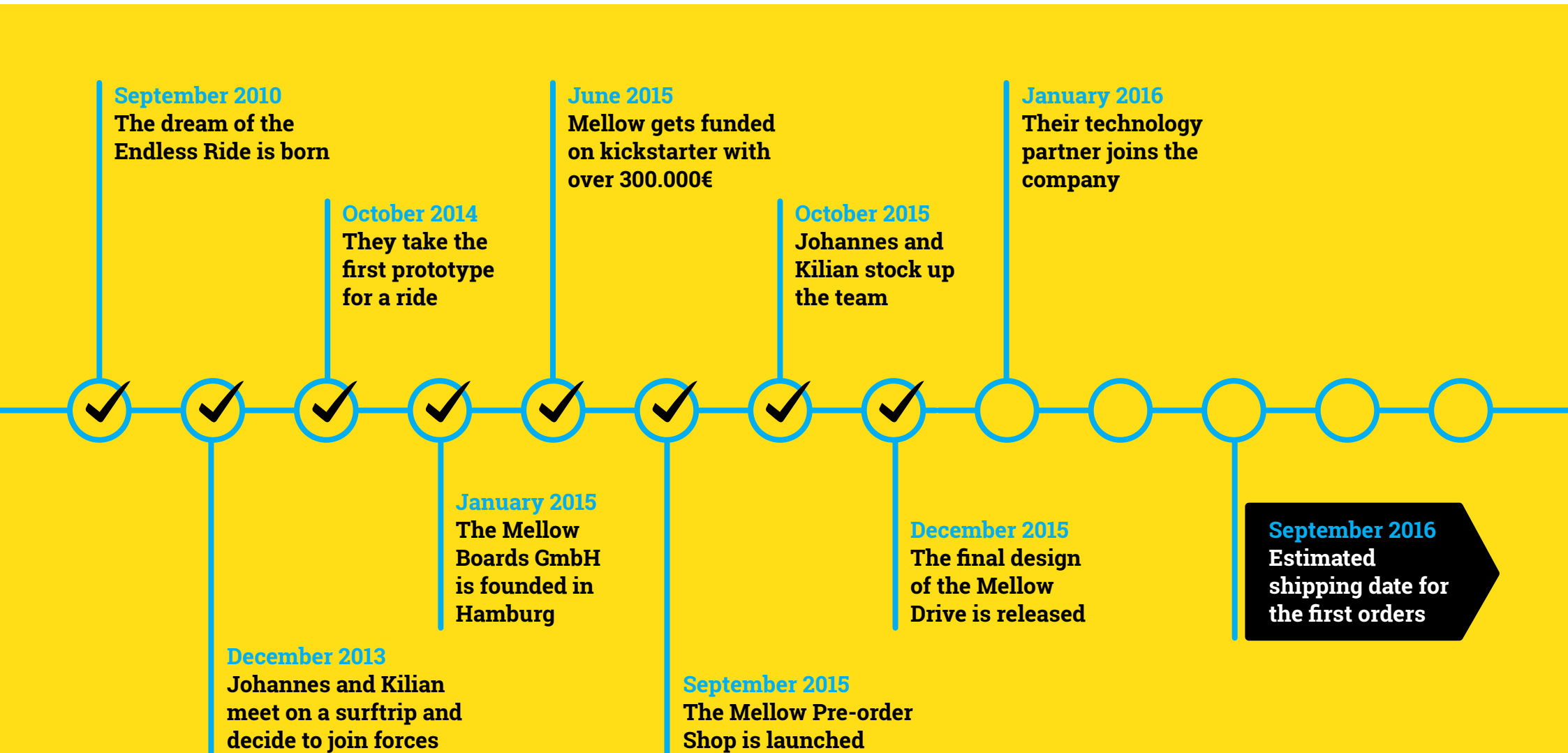
Mellow was **founded by Johannes Schewe and Kilian Green**. They are supported by a team of **12 hungry young professionals** that bring an enormous amount of **ambition and creativity** to the table.

Johannes – Founder, Boardsports Enthusiast and Sports Economist with more than 15 years playing and working in the boardsports industry, is putting all his energy into **bringing the Endless Ride to the streets**.

Kilian – Mellow Cofounder from Nerdistan and Mechatronic Engineer is not only a passionate surfer but also an Ex-BMW electric car engineer using his know-how to **shape the future of urban transportation**.



THE HISTORY





For further information and all press related questions please **get in touch with Wiebke** at press@mellowboards.com or follow us on **social media**.



Keep Riding. Stay Mellow.